

TM 9-6115-545-24P
TO 35C2-3-444-4
NAVFAC P-8-626-24P
SL-400038G/07499A

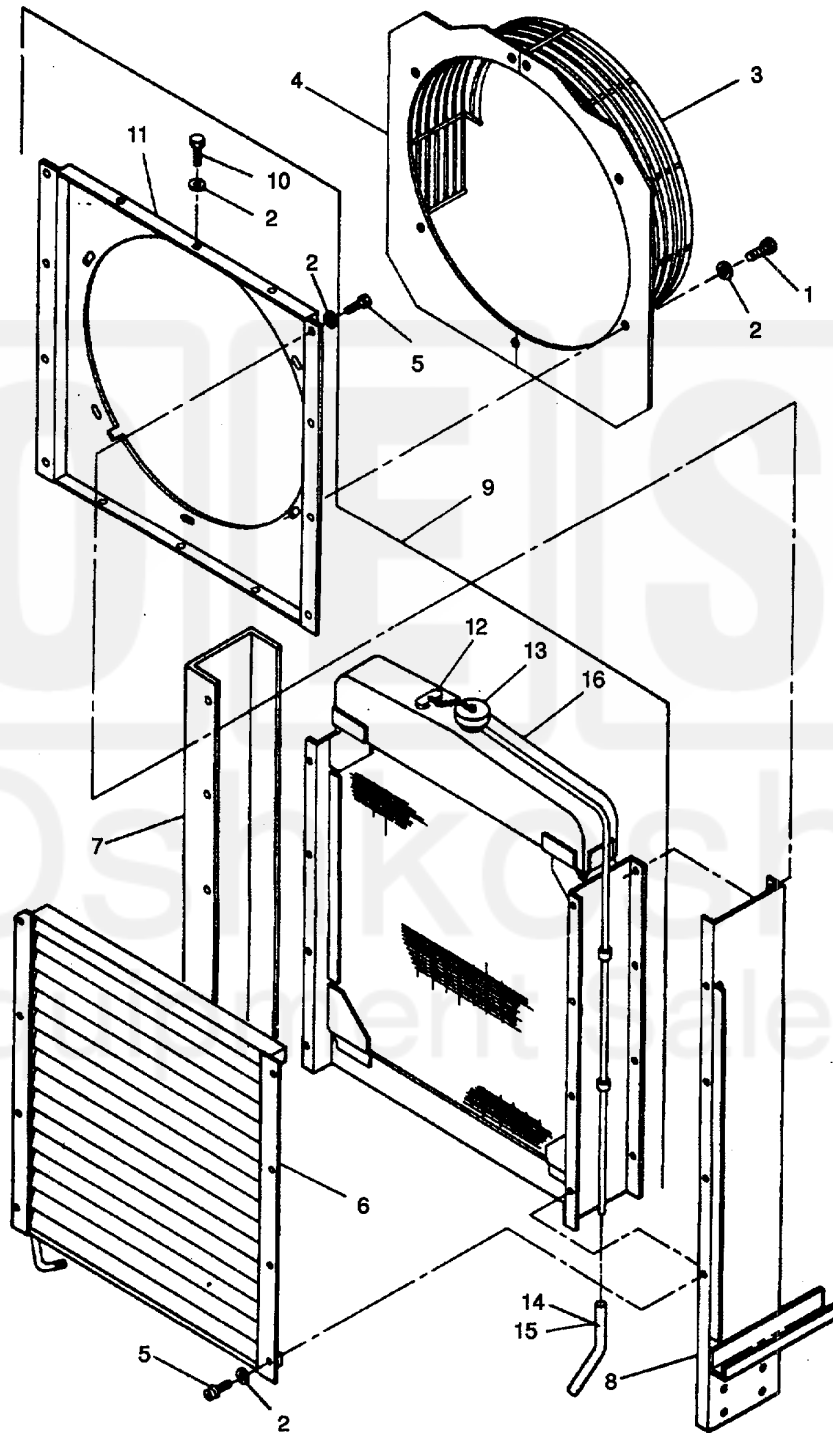


Figure 78. Cooling Group.

(217 blank)/218

TM 9-6115-545-24P
 TO 35C2-3-444-4
 NAVFAC P-8626-24P
 SL-400038G/07499A

| (1) ILLUSTRATION | | (2) SMR CODE | | | | (3) USMC | | (4) NATIONAL STOCK NUMBER | (5) DESCRIPTION | | | (6) | (7) | (8) |
|---------------------|-----------------|-----------------|----------------|-----------|-----------|-------------|------------------|------------------------------|--|----------------|-----|-----------------|--------------------|-----|
| (a) FIG NO. | (b) ITEM NO. | a ARMY | b AIR FORCE | c NAVY | d USMC | a SSI | b REPL FACTOR | REF NUMBER | MFR CODE | USABLE ON CODE | U/M | QTY INC IN UNIT | USMC QTY PER EQUIP | |
| 78 | 1 | PAOZZ | PAOZZ | ZBOZZ | PAFZZ | D | .008 | 5305-00-225-3840 | SCREW, CAP. HEX HD MS90725-7 (96906) | | EA | 7 | 18 | |
| 78 | 2 | PAOZZ | PAOZZ | PAOZZ | PAFZZ | D | .010 | 5310-00-889-2528 | WASHER, LOCK MS45904-68 (96906) | | EA | 25 | 46 | |
| 78 | 3 | PBOZZ | PBOZZ | XBOZZ | PAFZZ | | | 611501-036-5619 | GUARD, FAN, LH 70-1129 (30554) | | EA | 1 | 1 | |
| 78 | 4 | PBOZZ | PBOZZ | XBOZZ | PBFZZ | | | 6115-01-036-5618 | GUARD, FAN, RH 70-1128 (30554) | | EA | 1 | 1 | |
| 78 | 5 | PAOZZ | PAOZZ | XBOZZ | PAFZZ | D | 008 | 5305-00-225-3839 | SCREW, CAP, HEX HD MS90725-8 (96906) | | EA | 12 | 14 | |
| 78 | 6 | PAOZZ | PAOZZ | PAOGG | PBFFF | D | .010 | 2930-01-171-0328 | LOUVER, METAL 70-1127 16369 (30554) (96309) | | EA | 1 | 2 | |
| 78 | 7 | XBOZZ | XB | XBOZZ | XBFFF | | | | SUPPORT, RADIATOR, RH 70-1032 (30554) 70-1032 (93742) | | EA | 1 | 1 | |
| 78 | 8 | XBOZZ | XB | XBOZZ | XBFFF | | | | SUPPORT, RADIATOR, LH 70-1033 (30554) 70-1033 (93742) | | EA | 1 | 1 | |
| 78 | 9 | PBOFF | PBOOO | PBOGG | PAFFF | I | .015 | 2930-00-322-0600 | RADIATOR, ENGINE 70-1126 (30554) X1696 (73540) | | EA | 1 | 1 | |
| 78 | 10 | PAOZZ | PAOZZ | XBOZZ | PAFZZ | D | .008 | 5305-01-073-6998 | SCREW, ASSEMBLED WASHER 1/4-20 X 1/2 IN. LG. 69-662-77 (30554) 61-250841-40-014280542B (78189) | | EA | 6 | 6 | |
| 78 | 11 | XBOZZ | XB | XBOZZ | XBFFF | | | | SHROUD A7272 (73540) | | EA | 1 | 1 | |
| 78 | 12 | XBOZZ | XB | XBOZZ | XBFFF | | | | PIN, MS29523-1 (96906) | | EA | 1 | 2 | |
| 78 | 13 | PAOZZ | PAOZZ | PAOZZ | PAFZZ | D | .008 | 2930-00-720-2677 | CAP, FILLER OPENING MS35840-1 (96906) | | EA | 1 | 1 | |
| 78 | 14 | MOOZZ | MOO | PAOZZ | PAFZZ | - | .070 | | HOSE, RADIATOR 70-1631 (30554) 70-1631 (93742) | | EA | 1 | 1 | |
| 78 | 15 | PAOZZ | PAOZZ | PAOZZ | PAOZZ | | | 4720-00-273-9514 | MANUFACTURE FROM HOSE, 839961 (19207) | RUBBER | FT | 2 | 2 | |
| 78 | 16 | XAFZZ | XB | XAOZZ | XAFZZ | - | .015 | | CORE AND TANK X1698-5 (73540) | EA | 1 | 1 | | |